

Introduction

From Andrew :

This guide is 7 years overdue, everybody knows that. For years people have been coming to me asking for descriptions, directions and topos, and all it needed was final impetus to collate all the information into one place. Leaving the country for the snows of the Northern Hemisphere gave the final push into days of frantic writing, and eventually the transfer into Jeremy Colenso's hands for publishing. Due to the lack of time, the guide is not as good or as complete as I would have liked it to be. Nevertheless..... this book is intended to be a climber's guide to some of the best routes in the Western Cape, rather than an exhaustive catalogue of every climb & scramble in the region. So while all the good easy climbs have been mentioned, the majority of the routes lie in the 17 - 24 range. Every attempt has been made to provide a comprehensive & accurate documentation of each area, but controversy in grading & star ratings will obviously arise. Take it or leave it, it's the author's opinion.

This guide also refers to the various publications the MCSA have managed to produce : the Table Mountain, Apostles, Muzenberg & Du Toit's Kloof guides. The book simply completes the picture, giving straight information without the photographs, geology, fauna & flora and other coffee-table paraphernalia. It is written by climbers for climbers.

The last 7 years have been fruitful. Grades have been raised from 22 to 29, people have started moving up through the grades, and hundreds of magnificent quality routes have been opened. Overall however, there have been only a tiny handful of consistent new route activists. This is a sad fact of South African climbing : to many people are content simply to repeat routes others have opened, or work on the big numbers that others have established. This guide has put down on paper most of the good routes so that people may climb them, but more importantly, it also shows all the spaces in between the lines. It is these gaps that point the way to the future of climbing in this country. All it takes is some imagination, a long neck or a bolt drill, and a lot of commitment. You have the future in your hands, don't let it slaynate. Good Climbing !

AdK

Cape Town, February 14, 1989

From Jeremy :

Well the next few lines are mine to say a few words. There might be some loose rock & bush in this edition, don't be alarmed, it's all on disk and easy to change. Any constructive criticisms & new routes, bearing in mind what Andrew just mentioned, should be addressed to me. But please - no clipping of grades.

Jeremy Colenso 25 April 1989

Contents

Introduction
Contents
Grading Comparison

Part I - Peninsula Climbing

Table Mountain
Postern Butress
Valken Butress
Spring Butress
Lion's Head Granite
Nursery Butress
Muzenberg
Eisles Peak
Scarborough
Peninsula Bouldering

Part II - Country Climbing

Paarl Rocks
North West Face Du Toit's Peak
Yellowwood Amphitheatre
Montagu - Lost World Crag
Klein Winterhoek
Castle Rocks
Dragoor/Duvelskloof/Hutchinson's Complex

Part III - Cedarberg Climbing

Pakhuis Pass
Karakadouw
Tafelberg
Welbedacht
Wolfberg

Acknowledgements

Cover Picture : AdK on Silvermine Boulder - Picture by Nic (Moose) Good.

II
III
V
2
5
6
7
9
13
14
16
20
23
29
33
37
42
53
57
59

64
71
79
95
96

Table Mountain

See MCSA Guidebook Part 1 for *Africa & Fountain Ledges, and Lower Buttresses*. This is intended as a supplement to that, for all the routes added since their 1979 publication.

Fountain Ledge

Routes are described from the right hand side of the ledge, as for the MCSA guide.

1. Point Source (23) ***
Between Last Laugh and Fountain Edge is a break through the roof below a shallow corner.
Pitch 1 (23) : Climbs through the roof and then diagonally right to belay on a ledge with a tree.
Pitch 2 : Finds it's way somehow to the staircase ledge.
Pitch 3 (20) : Climbs the smooth face just left of the Escalator top pitch.

FA: A. de Klerk & D. Kellins 1982

2. Chemin de Fleur (25) ****
The new version of the old Tour-de-Force without the flake on pitch 1.

FA: Ed February 1988

3. Local Hero (25) ****
The direct crack through the roof on Chemin de Fleur/Tour de Force. Rap anchors above on the ledge.

FA: AdK 1985.

- ✓ 4. Don't Squeeze or I'll Laugh (17) ***
A sneaky direct through Finale. Starts right of Finale and climbs a flattish arete, through the roof and up the slab below Finale's traverse. Belay on Finale's ledge.
Pitch 2 : (Also 17) Climbs the steep corner just left of Finale's crack to a rail, then left and up to Staircase's ledge.
Pitch 3 : (Still 17) Is shared with Point Source, ie - up the wall left of Escalator.

FA: G. Lacey & E. February 1982.

- ✓ 5. Hagall (20) ***
Start just right of the staircase crack.
Pitch 1 : (20) Climb the ramp and through the roof. Up the wall and traverse right to the Escalator stance.
Pitch 2 : (15) Move up from the belay to an undercut handrail. Rail right until able to stand, then straight up to the Staircase ledge. Walk right to the corner of the smooth wall.
Pitch 3 : (19) Climb just right of the corner to where it blanks out. Finish up the Arete.

FA: AdK & A. Wood 1982

6. Cool Cat (23) ****
Right of the Escalator/Staircase Routes is a long overhang 6m up. On the right-hand side is a shallow corner. Cool Cat climbs this, and goes through the roof to a small ledge. Continue up the corner to a small ledge. Figure out a way off.

FA: H. Davies 1979 (Top rope on crux)

FFA: AdK 1982 (Complete lead)

7. Boulder Highway (23) ****
Starts between Escalator and Cool Cat.
Pitch 1 : (23) A hard move just right of the escalator crack reaches the roof. Traverse slightly right to a break (shallow corner on the lip of the roof). Pull through & up to a thin ledge.
Pitch 2 : (15) Traverse right just above the overhang to the right hand arete. Climb up to the upper staircase ledge.
Pitch 3 : (22) Climb the smooth wall just left of the right-hand corner.

FA: AdK & G. Morton 1983

8. Eternity Road (23) *****
Two pitch route that starts from the extreme left-hand end of the upper Staircase ledge.
Pitch 1 : (23) Climb the obvious groove and crack in the centre of the smooth wall (Boulder Highway is just to the right). Continue through the roof to a ledge on the left.
Pitch 2 : (20) Climbs straight up the arete above to the top of the pinnacle.

FA: AdK 1982

9. Scaredy Cat (25) ****
Might be used as a logical finish to Cool Cat. Start 3m left of Eternity Road on the upper Staircase ledge, just below a small flake. Climb straight up the wall to the roof. Continue straight through (crux) up to the Eternity Road ledge.

FA: AdK 1985

10. Farewell to Arms Direct (20) ***
Pitch 2 of Farewell to Arms : (20) Climb straight through the bulge above the hanging belay.
Pitch 3 : (20) Climb straight up from the Touch and Go ledge through two long thin roofs.

FA: AdK (Toproped 1982, Led 1985)

11. Arms Race (22) ****
Line taking a steep groove down & to the left of the huge triangular roof. Scramble up and leftwards to the steep right-facing groove, starting level with The Dream.
Pitch 1 : (22) Climb the groove.
Pitch 2 : (21) Climb straight through the overhanging nose above and diagonally right up the wall to a hanging belay on the Cableway Crag traverse, below and left of that route's last pitch.
Pitch 3 : (22) Climb through the roof left of Cableway's last pitch & continue straight up the wall on thin holds.

FA: E. February, AdK & G. Lacey 1982

FFA: (Pitch 1) AdK 1982

12. Olis (22) ***

The face below the first pitch of Staircase

FA: J. Colenso 1986

Africa Ledge

1. Railrunner (21) *
Aims for the huge rail across the big pillar to the left of the Africa cracks chimney & finds a way up the wall above the left-hand end of it.

FA: G. Robbins & D. Bottomley 1983

2. Tales of Tranquility (22) **
Pitch 1: (22) Shares the start of Atlantic Crag and its traverse to the cave belay stance. Continue through the roof directly above the block to the upper Africa ledge.
Pitches 2 & 3 : (17,21) Climb the wall to the right of Africa Cracks.

FA: AdK (solo) 1982

3. Polyphased Deformation (21) **
Takes the wide chimney crack on triangular roof that forms the underside of the Africa Crag nose.

FA: AdK & G. Morton 1984

Lower Buttresses

1. Stoneschild (20) **
In the centre of the lower Venster Buttress. Start 30m right of Garden Boy & 20m left of Indian Rope Trick. The route follows a slight dihedral diagonally up left through the red rock to a stance in a shallow scoop. Avoid the gully & climb straight up the grey rock buttress above.

FA: G. Lacey, AdK & T. Versveldt 1982

2. Gentle Persuasion (22) *
Venster Buttress. Takes the off-width crack through the roof left of Garden Boy.
Pitch 1: (22) Climbs through this to the hanging belay on the Garden Boy rail.
Pitch 2: (22) Pulls through another roof to an off-width roof crack. Continue to a ledge and up.

FA: AdK & D. Kelkins 1982.

3. Fly or Dig (22) *
One pitch route taking the slab and roof crack just left of Garden Boy's first pitch.

FA: C. Atwell & C. Jackson 1984

Arrow Buttress

1. Broken Arrow (17)
Climbs the face left of Fraser's Variation.

FA: AdK, N. Good & M. Cook

Another route by G. Robbins, Manoeuvres by Moonlight (20) goes up in this region.

2. Black Arrow (17)
The overhang on the extreme left-hand side of the buttress.

FA: J. Colenso & R. Price 1987

Postern Buttress

1. Superpower (25) ***

The lower pitches are not worth doing, so gain access to the dangle ledge running the full length of the face two thirds of the way up. Do this either via a route (see M.C.S.A. Apostles guide 1979) or else by walking up woody Buttress on the right (see Spring Buttress guide) but walk up the buttress on the left of Woody Ravine and traverse in.)

The climb takes a crack through a seven metre roof near the left end of the front of the Buttress.

Pitch 1: (25): Climb the roof crack stance on the right.

Pitch 2: (19): Climb the wall above, diagonally from right to left. Gain the recess and so to the top.

FA: AdK, 1983.

2. Quiet Lane (22) ***

Situated on the North West corner of Postern, the route is 50m left and higher than Champs Elysees. The route climbs an obvious crack line through the Ripcord traverse and through the one and a half metre roof above.

Pitch 1: (22): Climb the crack to a stance.

Pitch 2: (21): Climb through the crack in the roof and continue easily to the stance.

Pitch 3: (11): Continue up cracks to the top.

FA: G. Lacey & Ed February.

FFA: AdK & G. Lacey

[For access and other route info, consult the MCSA Apostles guide.]

Valken Buttrass

For access: See the MCSA Aposites guide.

1. Vengance (23) *

Climb steep walls on the right hand side of Valken Buttrass. Follow the path that skirts the buttrass around right to a clump of trees. Scramble up cracks to a higher ledge below a corner capped by overhangs.

Pitch 1: (21): Climb the corner to a small roof. Slightly left onto a protruding rib enables access to a crack. Climb up to the first roof and traverse left and up to a higher rib. Follow this to stance on a big block on the left.
Pitch 2: (13): Climb diagonally right to narrow ledge in a scoop below a steep wall.
Pitch 3: (23): Climb into a discontinuous crack on the steep wall. Follow this for 45m to belay next to a block on a ledge. Walk right to a clean left facing wall. Climb the crack and face into the ofwidth. Traverse right at the top to easy ground. This clean left facing wall is pitch 4, and is graded 20.

FA: T. Holt & P. Douglas. 1981.

FFA: AdK 1982.

2. Persona non grata (21) **

Barrier Buttrass: (see MCSA guide)

FFF: Adk & R. Hess 1981.

FA: T. Dick & D. Cheesmond 1978.

Spring Buttrass

Access walk up Woody Ravine and the crag is on the right. The climbs described start from the left end. (ie NW corner.)

1. Yo-Yo (19) **

The climb is on the NW corner of spring buttrass. About 200m from the top of the ravine the path turns very close to the rock wall. At a level slightly higher than this, a steep juggy face leads to an obvious crack.

Pitch 1: (15) Climb the face moving diagonally right, then left. Ascend the crack to a stance below a small overhang.

Pitch 2: (19) Through the roof, over jammed blocks. Continue up, then start moving left through overhangs before a final hard move to a rail allows a traverse left.

Pitch 3: (15) Diagonally right.

FA: G. Lacey & E. February 1982

2. The Third Eye (22) **

NW Corner of Spring Buttrass. 200m below the top of the ravine where the path turns close to the wall, is a line crack in a 20m left facing open book. This is The Plunge. The Third Eye starts at a crack 5m to the left.

Pitch 1: (19) Climb the crack; Stance on the right.

Pitch 2: (22) Slightly left and through the overhangs. Continue up on water-worn rock to a stance.

Pitch 3: (19) Climb into a small bottomless dihedral. Exit left and up the wall through a series of overhangs. Traverse right to a shallow open-book leading to the top.

FA: G. Lacey & E. February 1982

3. The Plunge (19) **

Start in the open-book right of The Third Eye.

Pitch 1: (17) Climb the crack.

Pitch 2: (15) Climb straight up on water-worn rock to a stance below an undercutting flake with a right-facing shallow open-book heading to the right-hand side of the overhangs.

Pitch 3: (19) Climb the easy dihedral and traverse left below the roofs. Pull through into the shallow undercut open-book.

Pitch 4: (15) Climb through the crack in the roof and the wall above.

FA: G. Lacey & E. February 1982

FFA: AdK, G. Lacey & E. February 1982

4. Stairway to Heaven (20) **

On the NW corner of Spring Buttrass between the subsidiary wall on the left, and the main amphitheatre on the right is a small weathered wall. The climb ascends a crack to the right of centre on the buttrass & then climbs diagonally up right past the overhangs. Start in a shallow overhung scoop. 4 pitches (20, 13, 15, 15)

FA: G. Lacey & E. February 1982

5. The Gates (20) ***

Level with the ledge traversing in from the frontal ridge on the buttrass on the NW corner of Spring. Is the start of a line on obvious overhanging open books on the prow between the main amphitheatre on the right and the smaller side wall on the left.

Pitch 1 : (19) Climb the wall to a ledge & traverse left to a stance below the overhanging open book.
 Pitch 2 : (23) Climb the book. At the roof rail left to the prow on the lip.
 Pitch 3 : (19) Continue up the open books, tending right.
 Pitch 4 : (13) Climb the crack & walls to the top.

FA: G. Lacey & E. February 1982
 FFA: AdK & E. February 1983

6. Railrunner (20) **

NW corner of Spring. Start 10m right of The Gates, behind a dead tree.
 Pitch 1 : (19) Stand on the block; balance for the handrail, climb up on the left.
 Stance in a cubbyhole on the right.
 Pitch 2 : (15) Traverse right to a good ledge.
 Pitch 3 : (17) Climb the open-book behind the ledge and rail to a stance.
 Pitch 4 : (20) Climb the slight book above & rail right. Move up and back left. Climb the short wall into the crack above, stance on the right.
 Pitch 5 : (19) Climb the wall above.

FA: G. Lacey & E. February 1982
 FFA: AdK & E. February 1983

7. Silver Tightrope (20) **

Halfway across the main amphitheatre of Spring, and directly underneath the huge final overhangs, is a small scooped amphitheatre. Fear of Flying (FA: E. February - details unknown) takes the break on the right (peg).
 Pitch 1 : (20) Either stem up a corner on the left, or pull on jugs and a prong to be able to traverse left. Gain the white nose on the left. Climb up until able to traverse right and stance below a large flake in a horizontal crack.
 Pitch 2 : (20) Climb behind the flake and then up the face with the large flake above. Traverse right and up to a stance above the belay.
 Pitches 3 & 4 : (17,19) Move up, traverse left (Fear of Flying traverse). Continue up - Railrunner's last wall.

FA: G. Lacey, AdK & E. February 1982

8. Men at Arms (22) ***

On the left-hand side of Spring Amphitheatre, midway between Railrunner & Silver Tightrope. Start in a shallow, undercut amphitheatre with some grass. There is a handrail traversing the face on the left.
 Pitch 1 : (20) Traverse in from the right to gain a small ledge 3m above the ground. Step left and down through grass to reach a good handrail. Traverse left to stand under a small overhang. Move through to a ledge.
 Pitch 2 : (22) Climb diagonally left and up a smooth white wall to a handrail. Go right and then diagonally right to a hanging belay at a sloping ramp.
 Pitch 3 : (19) Climb through the overhang on the right. Stance on the left.
 Pitch 4 : (19) Climb up on the left and traverse right to the last pitch of Railrunner. Climb to the top.

FA: AdK, E. February & G. Lacey 1982

Lion's Head Granite - Complete Guide.

Access: From Kloof Nek drive up towards Signal Hill. 1.5 km along turn left into a parking lot at a Mosque. Walk up the track towards Lion's Head for 50m before turning right on a trail leading to the crag.

On the extreme left of the crag is an easy descent route as well as the easy angled slabs leading down towards two big boulders near the left end of the rock. Routes are described from the left end where graffiti has been painted onto a wall.

DSLGL Don't Start Laughing Gordon (13) *

Climb the face directly above the graffiti.

SIL Silhouette Face (13) **

Face just left of Silhouette Crack.

SIL Silhouette Crack (13) **

A thin crack on the wall left of Millions.

MIL Millions (19) ***

The curving crack above the left side of the large runnel/gully used for descent.

TICM The Amazing Incredible Cookie Monster (20/21) **

A thin crack and slab past bolts.

FA: J. Wise-Samson & G. Hattingh 1987.

PI Private Investigations (23) ***

Start in the same place as for Blue Max, and climb the first few moves of this. Pull over into the left-hand crack and over through the roof crack. Continue up the wall when the crack fades.

FA: AdK 1985

BM Blue Max (25) ****

Climb up to the leftward-curving roof just up from the tea spot (Bolt) Pull through and up the curving crack to a ledge.

FFA: AdK 1984.

TTIO Teatime is Over (24) *** 1B

Climbs the wall right at the tea spot. Pull onto the bulging wall past a bolt to a rail. Climb the crack to a small cubbyhole/ledge. Walk left. The easiest way off is to scramble down the 'Cave overhang groove' just left of the tree at the tea spot.

FA: Ed February 1987

HOD Heart of Darkness (23) *** 7B

Immediately right of the tea spot/waterhole is a wall leading up to a shallow groove. Climb directly up to two bolts, over the bulge and up the slab to a scooped stance high on the left. Friction up the wall on the right to the top.

FA: AdK 1984

FAL Free at last (23) *** 7C

Three bolts up the wall 2m right of Heart of Darkness. Rapp anchor on the slab above.

FA: AdK & E. February 1989

✓ DEP Depraved (16) *

Climb the leaning pillar (as for Huguenot Wall). Move left and follow a vague crack 1.5m left of HW's crack. Climb the face to the left of the leaning flake onto slabs.

✓ HW Huguenot Wall (13) ** *12m up? 35m 13 notched stance*
Climb the leaning pillar and crack onto the leaning flake/ledge. Walk right to twin cracks. Climb more or less straight up to the top.

✓ HV Huguenot Variation (13) ** *climb 35m climbing 2-3m up to slabs*
Variation start up to the twin cracks on Huguenot wall using a vague right-wards slanting crack up to the leaning flake.

✓ HI Huguenot I (11) *
An easy slab route that wanders up the face to the left of the Huguenot Crag pillar.

✓ HC Huguenot Crag (18) **
Scramble up the forked crack to the tree. More into the chimney and up to a wedged flake. Continue up through the curving roof and the corner above.

✓ TTC Tea Trolley Crack (17) ***
Climb up to the tree as for Huguenot Crag and move right onto the pillar which has a jam crack running up the middle of it. Climb this to the top.

✓ DR Daylight Robbinsy (23/24) ***
Right of TTC is a large chimney with an off-width crack inside it. Parallel and just above the Bastille Crack off-width is a thin crack. Climb up from the jammed boulder at the base to gain the crack & follow this diagonally over without using the Bastille crack.

FA: AdK 1985

✓ BC Bastille Crack (20) ***

Climb the off-width slot in the Hide and Seek chimney.

FA: B. Gross, C. Lomax & G. Lacey 1978

✓ H+S Hide and Seek (10/11)

The main chimney includes fig trees, grotty corners and chimney tunnels.

✓ SC Scratch (17) ***

The arete right of the Bastille Crack/Hide and Seek Chimney. Two pitches. The first climbs the slab/arete past a bolt to a crack and up to a flake stance. Pitch 2 moves slightly up and then right to a small roof/overlap. Climb through & diagonally left to finish.

FA: Aleck McKirdy 1977

✓ AQ Aqualung (15) ***

Start 15m right of Scratch below some overlaps in the main wall. Climb up to the overlap and then straight up the wall to belay at the bolt on the Scratch traverse. Continue straight up to finish.

FA: AdK (solo) 1984

✓ CL Crystal Longiness (18) *****

Starting just left of De Bruin Damage climb up the face on white streaks. Move up leftwards until below the small roof high up. Climb straight up past a bolt to belay below the roof. A further pitch (16) goes straight up from here to finish.

FA: AdK (solo) 1984

✓ DBD De Bruin Damage (19) *****

Follow the thin crack on the right hand side of the Main Wall. 2 pitches. Excellent climbing.

FA: B. De Bruin

✓ CC Cross Cracks (10)

Easy chimneying up past two precariously balanced flakes. Exit right near the top.

✓ AF Angry Face (17) **

Variation to Cross Cracks using blind cracks on the right-hand wall. Traverse left to a crack running parallel to the flakes, and join Cross Cracks half a pitch higher.

✓ BS Brain Strain (19) ***

Climb the face right of Angry Face (no runners). A belay is taken in the Cross-Cracks chimney, and a second pitch traverses back out and continues climbing straight up.

FA: G. Robbins & D. Baker 1984

✓ JP Jampuff (16) **

10m right of the Syringa Tree is an obvious hand crack through a bulge/overhang.

✓ VE Visions of Ed (24) ****

Right again is a smooth concave wall. Climb up the shallow depression which steepens at the top following the bolts.

FA: J. Colenso 1988

✓ FS Fighting Senility (25) ***

Just around the corner from Jampuff is a crack leading up to a small groove/roof feature. Climb up, past the roof into the groove at the top. Move left at the top and back right up to the finish.

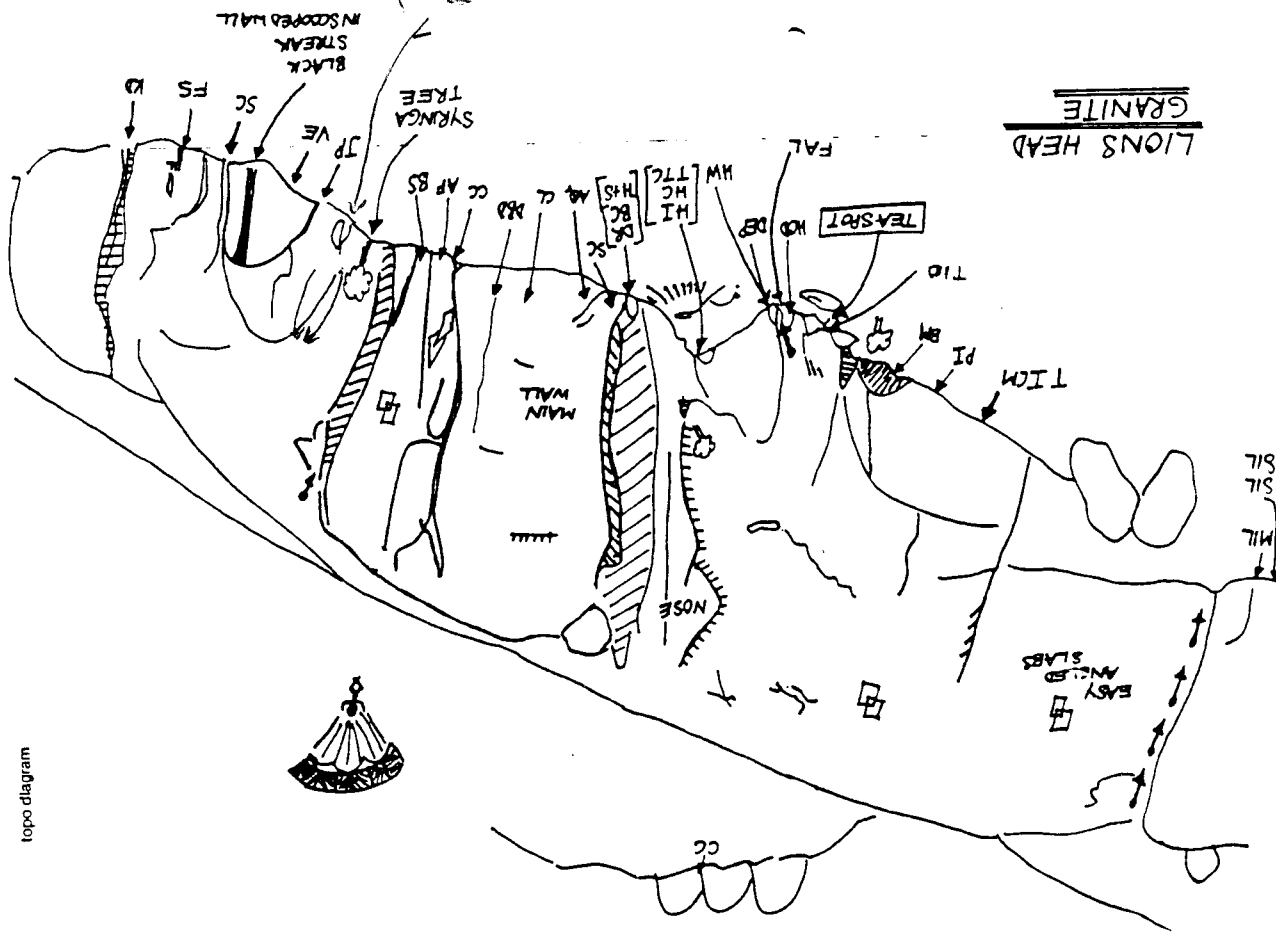
FA: Ed February 1987

✓ SC Scottini's Chimney (12)

The deep crack right of Fighting Senility.

✓ KD Knuckleduster (16) *

A chimney/crack further right of the concave wall.



Topo lines joined 18.8.15
Return of 18.8.15

Nursery Buttress

Access: From Kirstenbosch walk up Nursery Ravine. The Crag is on your right. Climbs worth doing are described from the left.

1. Nursery Gambols (17) ***
The route starts at a prominent solitary tree on the slope to the left of the wide ledge traversing the buttress.
Pitch 1 : (11) Climb the recess below the left-hand corner of the long overhang above. Walk right to a ledge.
Pitch 2 : (9) Up a recess with a chockstone. Walk right for 20m.
Pitch 3 : (11) Climb into a recess up to a traverse left that leads up to an easy chimney & a ledge.
Pitch 4 : (17) Pull through the notch into a recess. Climb up to the big roof.
Pitch 5 : (13) Climb out through the roof crack and up the right-hand recess to the summit.

FA: H. Snijders & M. Kotze 1967

2. Buccaneer (22) ***
The route starts up breaks to the right of Nursery Gambols (a short right facing corner) and follows cracks and corners leading up to a crack in a right facing corner below the left-hand end of the second last big roof. This is done in 3 pitches (15, 19, 19).
Pitch 4 : (20) Climbs this crack/corner to the big ledge below this roof.
Pitch 5 : (22) Start on the right and climb up to the rail. Go left and around the corner. Hanging belay just higher.
Pitch 6 : (19) Traverses horizontally right for 35m to the end and scrambling. A variation on pitch 6 climbs directly up from the hanging belay and through the roof via a flake. (Direct finish (22).

FA: B. Gross, G. Lacey & C. Lomax 1977
FA: (Direct Finish) AdK & M. Versveldt 1984

3. Looking on Darkness (20) ***
Start a few metres left of Buccaneer (the easy crack with two jammed blocks).
Pitch 1 : (20) Climb the crack through a bulge to a ledge.
Pitch 2 : (19) On the left is an easy break (Nursery Gambols), and on the right the crack on Buccaneer splitting the black streak on the wall. Climb the face in the middle to gain a crack. Climb up to a ledge.
Pitch 3 : (20) Climb the obvious crack on the left. At the overhangs go left, up, and back right in order to go through the roof crack. Walk right to a right facing open book.
Pitch 4 : (15) Traverse right for 15m and climb the crack before traversing back left to a stance.
Pitch 5 : Climb diagonally up to the top.

FA: G. Lacey & A. Wood 1982

4. Power Struggle (22) ***
Start 20m right of the solitary tree of Nursery Gambols.
Pitch 1 : (22) Climb a wall & left facing open book to the roof. Climb through the roof to a ledge.
A rappel tree is on the right, or walk 10m left to a crack from where 3 pitches (20, 13, 11) lead to the top.

FA: G. Lacey & E. February 1982
FFA: AdK 1983

Muizenberg Peak

The following routes are intended as a supplement to the MCSA Muizenberg guide (1986/7).

1. Dancing on the Ceiling: (24): ****

Take the roof crack on the lowest roof in the stepped roof system right of the brown amphitheatre.

FA: G. Howill. 1988
FFA: J. Fisher. 1988

2. Some like it Hot: (20) **

Starts in the inset face in the overhangs used by Squeeze. Scramble up to a ledge in the right hand corner below the roof.

- Pitch 1. (15): Rail right and pull over the overhang. Climb up to stance on a block.
- Pitch 2. (20): Walk 6m left to a clean arete. Climb the wall on the right of the arete to an overhang on the left. Pull through and up to a ledge under the big roofs.
- Scramble up diagonally left to a smooth inset face.
- Pitch 3. (19): Climb up the crack system on the right. Through a bulge to the top.

FA: W. Walkup & J. Davies. 1986.

3. Fear of flying: (18) **

Start at the smooth wall directly below the crux crack of Roadrunners Recess (i.e.: 30m right of Dancing on the Ceilings roof prow.)

- Pitch 1. (19): Climb directly up the face (10) to a crack in a polished face climb the crack to a ledge.
- Pitch 2. (12): Climb the face above and starting between the cave and a block on the right continue up the face into a thin crack and through a roof.
- Pitch 3. (18): Step of the block and climb the wall to a ledge. Walk left to the corner. Start up the corner and balance right onto the face. Climb diagonally right to the top.

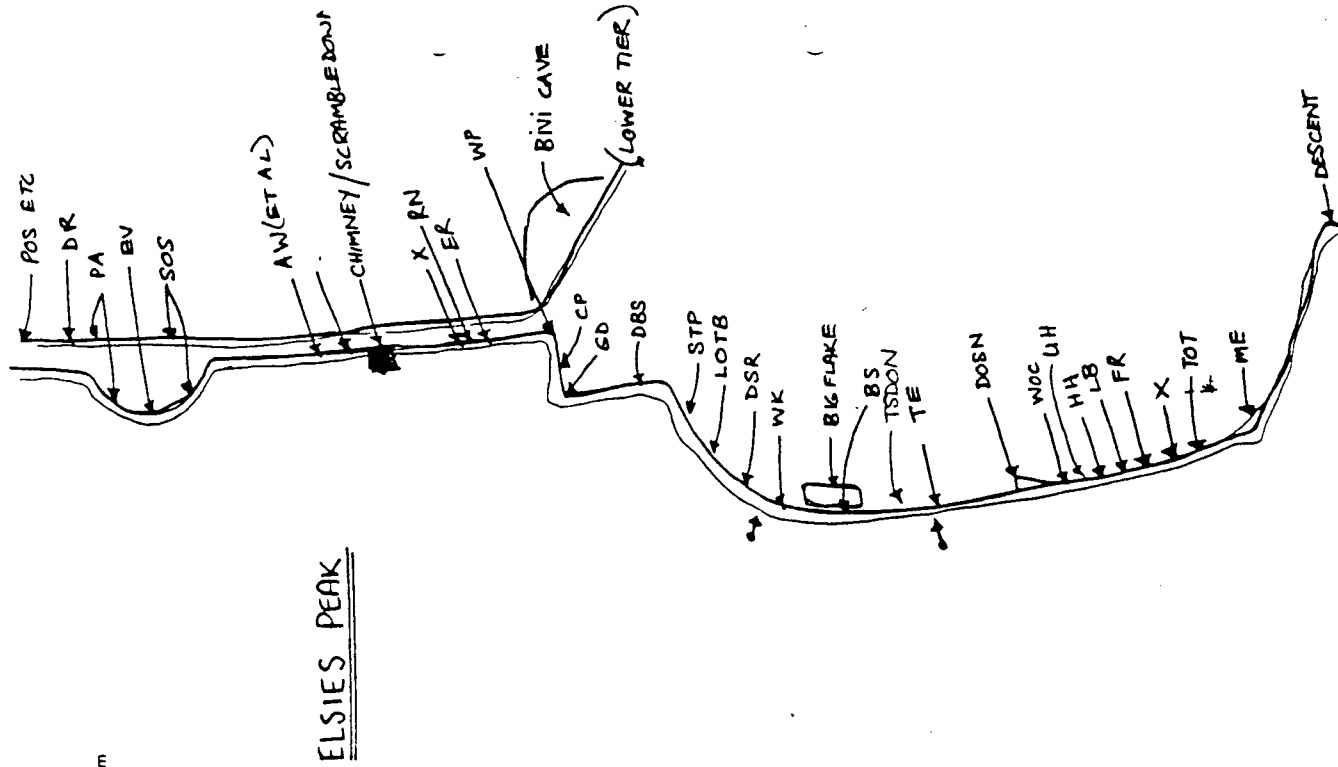
FA: J. Davies, W. Walkup & I. McPhearson 1987.

4. Surrender Arms: (18) **

Climbs the bulging rock on the left side of the smooth brown face which is to the left (around the ridge) of the main Muizenberg crag. Two pitches (19 and 18) wind their way up the bulges and roofs.

FA: J. Davies and W. Walkup. 1987.

This appears to be Silver Surfer (18) opened in 1983 by AdK & G. Morton.



Elsies Peak -Fish Hook

Access: From Fish Hook take the Simonstown road for about 3km to a turn on the right marked Hillside/Echo road. Drive straight along to a parking lot. Walk up the hill to the main overhanging amphitheatre on the left. Routes are described from left to right. Many have upper pitches besides the ones off the ground, and more attention should be paid to these.

Descent is either by rappell or by scrambling down the ridge on the left-hand side (looking in), which is fairly well beaconed.

ME Midnight Express (15) *

In crack/corner on the left-hand side of the amphitheatre. One pitch. Also known as Midnight Special.

FA: Unknown

TOT Turn of the Tide (23/24) ****

Pitch 1 : (23/24) Start between Midnight Express and Frankenstein below a smooth wall. Climb up past the overlap & up the slab on slopers. Continue up to a flake/ledge shared with Leadbelly.
Pitch 2 : (22) Move left from the stance and up to a break through the roof to the right of a corner/break (Leadbelly's pitch). Straight though & up cracks.

FA: Pitch 1 - C. Jackson (1985)

Pitch 2 - AdK (1985)

FR Frankenstein (12) *

Climb the blocky, easy corner up to a ledge. Finish up leftwards.

FA: Unknown

X Route X (11)

On pitch climbs a wide crack with an old fixed bong to the same ledge.

FA: Unknown

LB Leadbelly (22) **

Pitch 1 : (20) Takes the obvious crack more or less in the centre of the amphitheatre. Climb this and stance on the left.
Pitch 2 : (22) Move up left from the stance to a corner/break through the roof & up cracks to the top.

FA: Unknown

FFA: Pitch 1 - E. February & G. Lacey (1981/2)

Pitch 2 - AdK, E. February & G. Lacey (1982)

HH Hartley's Hangover (22/23) ****

Pitch 1 : (18) Start just right of Leadbelly and climb up a flakey/overlapping wall to a ledge.

Pitch 2 : (22/23) Climb the crack above and pull onto the wall. Continue up to the big roof. Move slightly left to two parallel cracks under the roof. Pull through and traverse right to a ledge.

Pitch 3 : (20) Climb the crack above and go left and up to the top.

FA: G. Lacey & E. February (1982)

FFA: AdK (1985)

UH Uhury (24) **

Climbs the wall between WOC and HH, through the overlap to the rail. (gear in HH & WOC)

FA: J. Wilse-Samson 1988

WOC Winds of Change (23) ****

Pitch 1 : (23) Between Hartleys Hangover & Stevie Nix corner are some cracks leading up to the triangular roof. Climb up to the twin crack & up past the left-hand side of the triangular roof.

Pitch 2 : (17) From the hanging belay go diagonally right up flakes and corners to a ledge.

Pitch 3 : (18) Climb up to the roof, move left and through to a thin rail. Go left to the outside corner and up to the top.

FA: Don Hartley and Co.

FFA: AdK (1982)

DOSN Dreams of Stevie Nix (24) ***

Start in the corner on the left-hand side of the big Dive-Bomber roof.

Pitch 1 : (22) Climb the corner and get established in the groove below the triangular roof. Swing right & up to the Winds of Change hanging belay.

Pitch 2 : (24) Climb up to the wide slot in the biggest roof. Through to a hanging belay above at the rail.

Pitch 3 : (20) Rail right to a crack. Climb up & through the bulge to the top.

FA: AdK & A. Jardin (1982)

TE Teardrop Explosion (25/26) ***

The crack through the roof just left of the big flake. Rappell anchor just over the lip.

FA: D. Hartley (originally called Dive-Bomber)

FFA: J. Colenso (1987)

SDN The Sleazy Dreams of Nix (21) ***

Start as for Teardrop Explosion. Climbs the curving seam to roof crack. Meets

Basic Shapes at the lip.

FA: J. Colenso & J. Wilse-Samson 1987

BS Basic Shapes (22) *

Start from the top of the big flake and pull through the roof. Climb the corner above and traverse right to a ledge. (Dream Street Rose ledge - original aid line of Dive-Bomber). Pitch 2 goes back left again and follows cracks/corners to the top.

FA: AdK & D. Kellins (1983)

WK Wild Kingdom (26) *****

Start in the corner on the right-hand side of the big flake. Climb onto the slab and up to the roof (bolt). Move right into the slot (Dream Street Rose). At the roof rail right and up to the next rail. Move out through the final roof past a pocket. Rappell anchor on the ledge.

FA: J. Fisher (1988)

DSR Dream Street Rose (27) *****

Just right of Wild Kingdom is a leftward leaning series of flakes/corners and roofs. Jump for the rail and up to a ledge. Climb through the roof past a bolt to a traverse

line left. Continue up and straight out through the last roof into a corner. Rappel anchor on the ledge. A second pitch climbs through the roof crack above (22).

FA: AdK (1985)

✓ LOTB Last of the Blacksmiths (20) **

Right of the Rose is a scoop/corner under a roof. Climb into this and rail right past 2 pins. Move onto the wall and go up tending slightly leftwards to the top.

FA: E. February & Co. (on adk, moving through the roof at the Stranger than Paradise crux.

FFA: (Slightly different variation) AdK (1982)

STP Stranger than Paradise (28) ****

Start as for Last of the Blacksmiths. At the two pegs go through the roof at a shallow corner/recess (peg). Continue up the easy arête to below the second roof. Climb through at it's apex (past a bolt). Go diagonally left to the Rose/Wild Kingdom Rappel anchor.

FA: AdK (1987)

DBS Don't be Silly (20) **

Squeezed in the wall between Last of the Blacksmiths and the Gemini Dream corner. Climb the wall just left of the corner & continue up flakes and pockets in the overlaps above.

FA: J. Fisher & P. Schlotfeldt (1987)

✓ GD Gemini Dream (17) ***

Climb the corner right of Don't be Silly. Go left at the top.

FA: AdK, R. Suter & M. Cook (1983)

CP Counterpoise (20) *

Start in the corner as for Gemini Dream, but go right at the first rail (wooden blocks), to cracks near the arête. Climb up to a small ledge (rappel anchor). A second pitch (15), climbs up to the top.

FA: E. February or D. Hartley

FFA: AdK & D. Kelkins (1982)

WP Wilbur Peqwanker (17) *

Climbs the arête right of Counterpoise and left of Eternal Rust. Goes into the corner which is made up by the left-hand side of the Eternal Rust roof.

FA: AdK & C. Jackson (1985)

ER Eternal Rust (28) ***

Right of the Gemini Dream corner is a rectangular roof. Climb the wall under the roof past a bolt. Pull through and into a short corner over the lip. Rappel or scramble off.

FA: AdK (1986)

RN Rusty Nail (21) ***

Right of Eternal rust. Climb up a pillar & then a face to a peg. Make a move right, then continue up more easily. Is this route the same as route X? Decide for yourself!

FA: M. Williams & R. Behne 1988

X Route X (17)

Right of Eternal Rust is a break through the roof. Finish up easy rock.

FA: AdK (1982)

DC Dave Cheesemond's route (15)

Climbs the reddish pillar.

FA: Dave Cheesemond

AW Amphitheatre Wall and a number of other easy routes go up in this vicinity. Most start on the lower band and all are graded (11) - (14).

SOS Sons of Scorpio (20/21) *

Pitch 1 : (20) Starts on the lower tier at a cave with two blocks inside it (as for Premature Arthritis). Climb up into a crack on the left-hand side of the cave. Continue to the scooped sandy ledge level with the Amphitheatre.
Pitch 2 : (21) Climb the corner on the left-hand side of the scooped wall (for Existential Void).

FA: AdK, M. Cook & G. Morton (1982)

EV Existential Void (23) ****

Starts from the upper tier at the scooped wall. Climb into the scoop and out to a rail. Climb into a thin crack leading to the roof. Move left and into the crack breaking through the roof to the top.

FA: M. Versveldt & AdK (1984)

✓ PA Premature Arthritis (19) ***

Start in the same cave as for Sons of Scorpio below a fist crack.

Pitch 1 : (19) Climb the fist crack, move left to a flake.

Pitch 2 : (16) Climb the flake and the corner to the ledge. Walk left to an overhang with a diagonal rail under it on the upper tier.

Pitch 3 : (15) Climb up to the rail, go left and up the crack to the broken ground. A fourth pitch (15) climbs a crack in the wall high up on the right.

FA: AdK, R. Behne & G. Morton (1982)

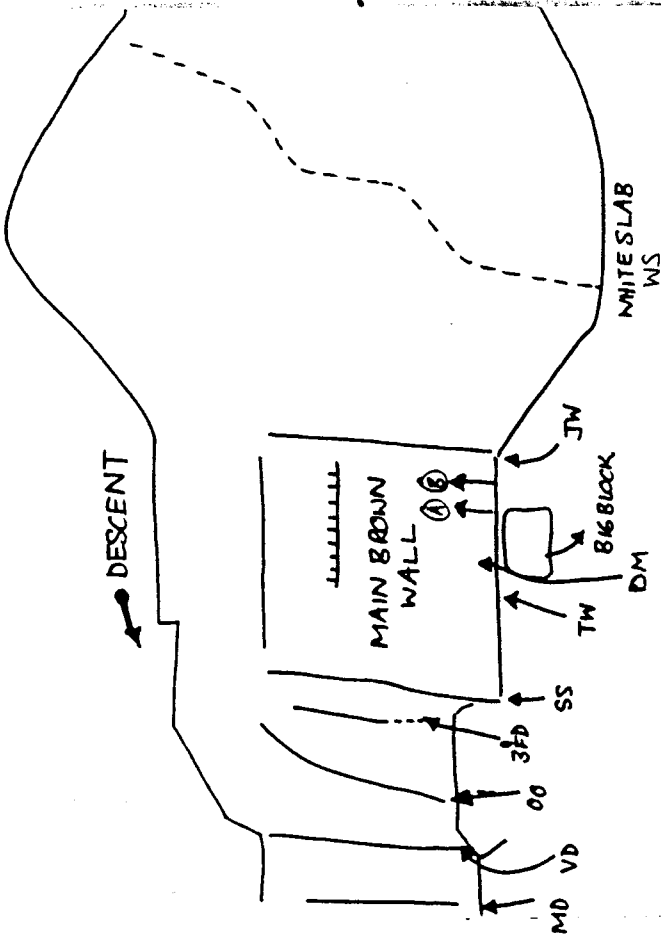
DR Dracula Another easier route in this area.

POS Poseidon A route down on the right of the lower tier. Pulls through a roof and continues up walls/corners above (Grade 20)

Rock to the right of this also has more unappealing routes.

Scarborough Crag - Misty Cliffs

Access: Follow the coast road from Kommetjie to Cape Point. Just before Scarborough the crag appears. Walk up on the left below the main brown wall. Don't climb in a strong South Easter as the crag gets very greasy.



MD Mullarian Duct (17) *

The right-hand facing corner pod. Climb the pod, exit left. Continue up over two short walls. Finish up the layback on the left.

FA: T. Holt & J. Holding 1982

VD Vraduct (19) *

The left-facing corner splitting the crag.

FA: T. Holt, J. Holding & P. Douglas 1982

OO Outsiders Outing (19) *

Just left of the Main Crag are two recesses, this line takes the left-hand one.
Pitch 1 : (18) Gain the recess and up to a roof. Traverse right and back left through the roof. A short groove/ramp leads to a ledge.
Pitch 2 : (19) Climb the bulging wall & crack above.

FA: T. Holt, J. Holding & P. Douglas

3FD 3 Flying Ducks (22) **

The right-hand of the two recesses.
Pitch 1 : (19) Climb the obvious crack, moving right at the overhang past an undercut flake.
Pitch 2 : (22) Above is a short, open book with a bulging wall on the right. Either climb up the recess or jump over the bulge on the right to pull onto a ledge. Up the crack.

FA: T. Holt, M. Versveldt & J. Holding 1983

SS Starling Stuff (17) *

The left-hand corner of the main brown wall.
Pitch 1 : (17) Start up a small wall and go right to a line leading up and left into the corner. Up to the roof & traverse left.
Pitch 2 : (17) Move back right and through the bulge above.
Pitch 3 : (17) Climb through via the niche on the left to the top.

FA: M. Versveldt, T. Holt & J. Holding 1983

TW Twillight World (22) ***

Start left of the overhang and big block.
Pitch 1 : (20) Climb the right-hand break approaching from the left to under a small overhang. Move right and continue to a hanging belay.
Pitch 2 : (22) Climb through the overhang. Move left and up to a stance on the left.
Pitch 3 : (17) Climb up on the right to a stance under the big roof. Climb through easily on the right.

FA: M. Versveldt & R. Price 1983

DM Demolition Man (25) ****

A line starting from the top of the block and climbing up the wall via a thin layaway crack. At the rail move left and up to a ledge to a rappel anchor.

FA: AdK & E. February 1986

A Monkey with a mission (22) ****

The roof and wall between JW and DM. Extra 2 Rock useful.

FA: J. Cosenso 1986

B Rumour of Peaca (23) **

The corner just left of Jah Wobble.

FA: J. Colenso & M. Versveldt 1987

JW Jah Wobble (22) **

Start at the base of the right-hand crack/corner/groove of the main brown wall.

Pitch 1 : (17) Climb up to a ledge on the right.

Pitch 2 : (19) Move out to the corner on the skyline where holds lead up to a stance below the big overhang.

Pitch 3 : (22) A large flake splits the overhang. Climb the crack on the left-hand side. On the lip follow two short handrails left to a ledge.

FA: T. Holt & J. Holding 1982

WS The White Slab (11)

Takes a rightward tending line (4 pitches).

Peninsula Bouldering**1. Silvermine Boulder ******

Access is from Ou Kaapse Weg from Tokal/Mulzenberg leading over the pass towards Noordhoek. Just over the pass turn left into a forestry gate at the Silvermine Nature Reserve. From the gate, the boulder is diagonally rightwards on the far edge of the pine trees.

2. Kalk Bay Boulder ****

Park at a small unused culvert at the point where Boyes drive makes a sharp turn left into Kalk Bay. A path leads up to the second (hidden) saddle on the ridge above.

3. Sunrise Boulders **

Situated in the gully coming down from the left-hand end of Mulzenberg Peak.

4. Baxter Theatre ****

A short wall is found on the College of Music behind the Theatre. Follow the circle road around the back and at the intersection of the road going up to the Bremner Building the wall is on the right. Good stamina training.

5. Newlands and Wynberg Bridges **

Underneath the De Waal Drive.

6. Llandudno ****

From the Beach, the boulders are on your right (looking out to sea). The first large boulder encountered has a smooth sea facing slab with two bolts. This is the American Dream (22) ***** FA: by M. Roberts 1985. Plenty of other bouldering around.

7. Eagles Nest

Constantia nek. Walk up the path, turn left, walk beneath the first rock band around the corner, and up to next level. Two good roof problems on the right, and a face on the left.

8. Peers Cave

Access: The easiest way to get to the Peers Cave bouldering area is from Ou Kaapse Weg. Stop at the parking area overlooking Sun Valley, and follow the path from there, or drive in as far as your car will take you.

Western Cape Rock

Paarl Rock - Complete Guide

Access: Driving along Paarl main road after turning off the N1 take the first road left after the Cape-Rio cafe (which is on your right). Drive up the hill to a gate-post. On weekends it costs R2-00 per vehicle. The gate closes at 6pm in winter, 7pm in summer. No camping at the Rocks.

Three main areas:

1. The Illearth Boulder

Situated at the final bend in the road (before the parking lot), amongst a clump of pine trees.

The Illearth Strong (26) *****

Climb the thin crack on the Cape Town side of the boulder.

FA: AdK 1985

Cannon Fodder (18) *

The cliff below The Illearth Stone, about 100m down is a prominent layback crack.

Pitch 1: (18) Climb the off-width.

Pitch 2: (15) Climb the layback crack to below a bulge.

Pitch 3: (18) Climb through the bulge (19'), chimney up. Scramble to the top.

FA: A. Forsyth, A. Wood & D. Shewell 1987.

Revelstones (21) ***

The scooped roof & wide crack on the Paarl side of the boulder.

FA: AdK 1985

2. Gordons Rock

From the parking lot this is the Right-Hand Boulder.

Routes are described anti-clockwise around the boulder. Walk up the steps & through the tunnel next to the car-park and a vague trail follows the rock around and up to a wall flanked on either side by wide chimney/cracks.

The routes described start from here.

Evidence of Things Not Seen (27/28) ****

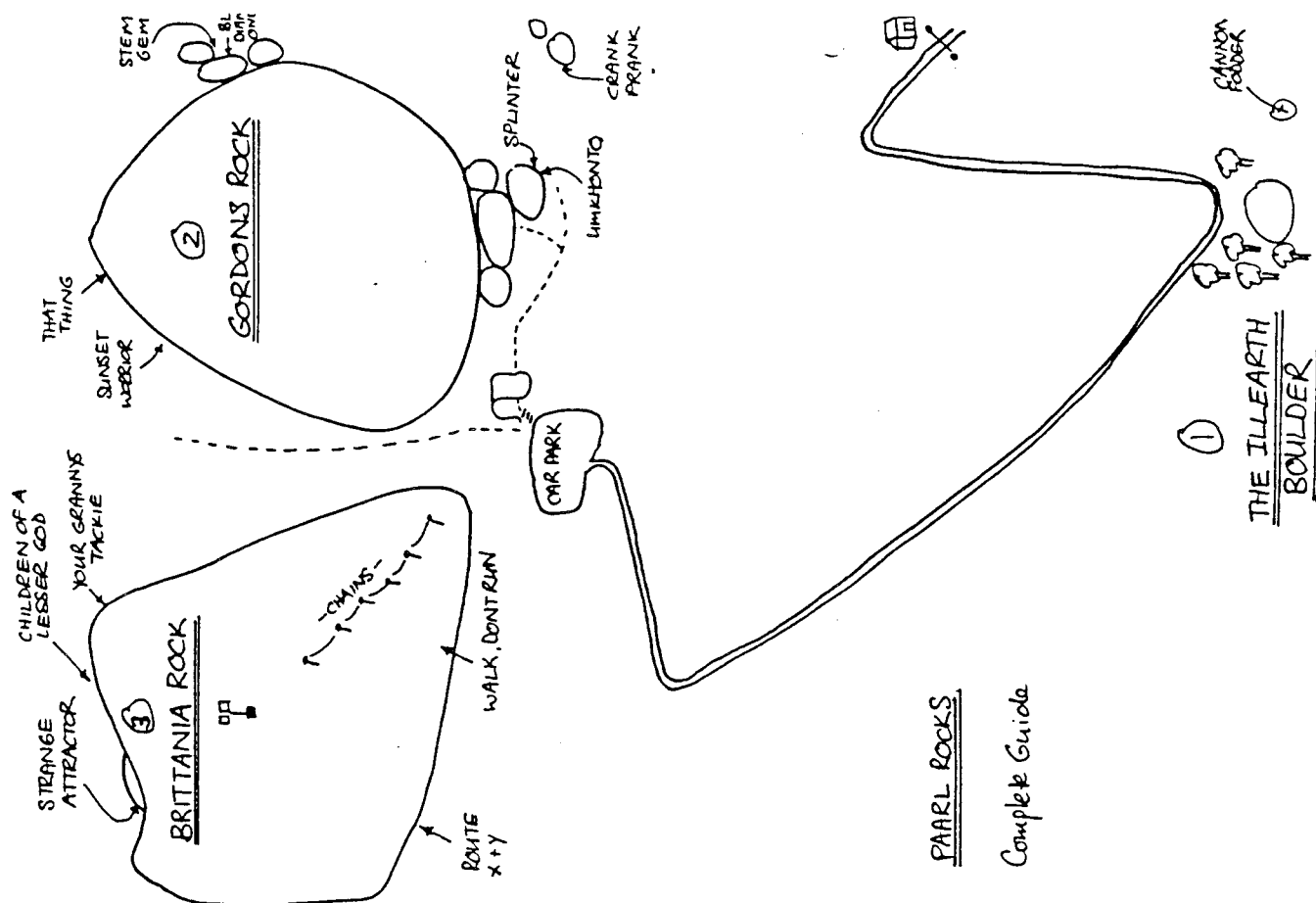
Climbs past 7 bolts up the middle of the wall. Use bolt no. 1 to reach the first holds.

FA: AdK 1988

The Inspector (23) ***

The arete right of Evidence

FA: J. Colenso 1989



Western Cape Rock

Bolts Are For Babies (23) ***
To the right of *Evidence of Things Not Seen* a bolt-line leads up the left-hand side of a concave boulder.
An undercut start gains the wall.

FA: E. February & M. Versveldt 1987

Bouncing Babies (22) ***
The next bolt-line right. Begins on a slab which steepens at the top.

FA: AdK, E. February, M. Versveldt & J. Colenso 1988

✓ Umkhonto We Sizwe (22) *****
Instead of walking up to the wall where *Evidence of Things Not Seen* & the *Babies* are; continue further along the path to a boulder split by a very thin flake. (This is directly below *Bouncing Babies*). *Umkhonto* climbs the left-hand side of the flake.

FA: AdK 1985

✓ Spinner of the Minds Eye (18) *****
Takes the right-hand side of the flake starting from the ledge 5m off the ground.

FA: C. Jackson & AdK 1985

Between *Umkhonto* & the road an isolate tor is visible which has a thin crack splitting it.

Crank Shank (24) **
Climb the undercut start to the crack & up to finish.

FA: AdK & I. Manson 1985

Continuing around from the *Umkhonto* area, there's a region of big pillars & cracks. The extreme left-hand crack is an off-width/corner:

Squirrel Germ (18) ***
Starts at the large tree at the base. Squirrel up the corner/crack.

FA: AdK & C. Jackson 1985

Blue Diamonds and White Ice (29) *****
45m right of *Squirrel Germ*. A diagonal crack overhanging up to the right (2 bolts/crux). Continues as a thin finger-crack splitting the white wall.

FA: AdK 1986

Down and around the corner, the back of *Gordons Rock* is reached.

✓ Stem Gem - The Baptism of Fire (22) *****
Just right of *Blue Diamonds* is a stemming corner, which eases off near the top. Finish up right.

FA: AdK & C. Jackson 1985

Down & around the corner the back of *Gordons Rock* is reached.

That Thing (22) & Prelude to the Wastelands (20) ***
That Thing climbs the obvious off-width corner formed by a giant pillar on

Western Cape Rock

the back of the rock.
The *Prelude* pitches are two friction leads above the top of the pillar.
Pitch 1: (20) Climb up to the 2nd bolt, go left and then up to the station.
Pitch 2: (18/19) More or less straight up.
Note: Some of these hangers have been removed. Wise to rappell down & see where the line goes.

FA: *That Thing* E. February & G. Lacey 1983
Prelude to the Wastelands E. February, AdK & A. Lambert 1983

Sunset Warrior (21) ***
Along from *Prelude to the Wastelands* is a crack/groove leading up to the woody gully.
Pitch 1: (15) Climb the crack/groove to the base of a long chimney.
Pitch 2: (20) Climb the groove, traverse left to a line of bolts.
Pitch 3: (21) Climb up the small scoop (bolt no.3), go right to a diagonal dyke, & up to belay at a big scoop.
Pitch 4: (15) Climb up on the right.

FA: (Pitch 1) E & R February 1977
(Pitch 2) AdK & E. February & G. Lacey 1982
(Whole Route) AdK & G. Bosch 1985
First complete ascent: B. Roux & M. Cartwright 1988

Going up the woody descent gully, just before the car park is reached, a crack/slab is seen on the left.

Eddie & Co Go Climbing (18) ***
Climb the crack, move right at the top. Continue up until able to traverse right to the crack. Climb the crack.

FA: E. February & G. Lacey 1982

3. Brittania Rock

Routes are described anti-clockwise from the parking lot. Going down the woody gully there is a runnel system on the far corner before the rock turns facing Cape Town.

Your Granny's Tackle (16) ***
Climb the grooves/runnels/slabs in a few pitches past a few bolts here and there.

FA: G. Athiros & J. Marchand. Bolts by A. McKirdy.

✓ Children of a Lesser God (22) *****
Takes the big diagonal (from left to right) dyke in the middle of the wall facing Cape Town (2 bolts, 50m rope). Finish up grooves.

FA: AdK & E. February 1988

Continuing along the base of the wall a half moon flake leaning against a slab is reached. Inside is a cave and a Y-shaped roof crack: You have now entered Phase Space.

Strange Attractor (27) *****
Climb the roof crack to the Y-junction & take the left-hand break (thin). At the slab, traverse right & up the corner to finish.

FA: AdK 1988

Phase Space (26) *****
As for Strange Attractor; but take the right-hand fork. Finish the same.

FA: AdK 1988

Going around the rock the next routes are on the slab on the left of the car park.

Two diagonal grooves were climbed by G. Athiros & Co going at about (15), and to the right of this is a smooth protectionless slab joining the Cables Route.

Walk Don't Run (12) *****
Friction up the slab over a small overlap. No gear.

Follow the line of 11 bolts
To the corner

Follow the line of 8 bolts
To the corner

SHADOWLAND 21 bolts
Open bench, 3 bolts

5.1.1.1.1.1.1

North West Face of Du Toit's Peak

Access: Just after the Du Toit's Kloof Tunnel, the Protea Hotel is reached. Approximately 3km after the hotel is a turn-off to the right immediately before a white bridge. Park inside the gate and walk up to a crossing where the river nears the right-hand bank. Continue along the left-hand bank over a hill and down the other side to cross the river again. Carry on along the right-hand side to a further crossing at a clump of trees where the kloof narrows. Further up the forest is gained and finally the campsite which is reached by taking the left-hand river junction. Shortly after, the scree leads up to the wall.

Descent: By Curry's 'D' route. From the top of the routes (except Chilonga) walk up diagonally left to where a calmed traverse line leads left and down gullies to an overlooking ridge left of the wall. Scrambling leads to the scree.

Consult the MCSA Du Toit's Peak Guide (1983).

- 1. Chilonga (22) **
K. Smith, C. Lomax & B. De Bruijn 1983
(See Topo Diagram, MCSA Journal 1983, MCSA Guidebook)
- 2. North By North West (20) *
(See MCSA Guidebook & Journal)
- 3. Renaissance (22) ****

Start up the obvious ramp that leads diagonally rightwards under the big triangular roof. Scramble diagonally right to ledges to begin with.
Pitch 1 : (11) Climb the right-hand side of the ramp to a tree (35m).
Pitch 2 : (15) Swing right onto a nose & continue up the right-hand edge of the ramp. (40m)
Pitch 3 : (17) Climb a recess right of a small blocky roof & continue up the ramp (40m)
Pitch 4 : (15) Climb up to the big ledge ¹/₃ of the way up. Walk 15m left to the [am cracks on the left-hand side of the pillar (30m)] [pitch 1-4 : scramble up NWF]
Pitch 5 : (20) Climb the crack, stance 10m higher. Traverse 20m right.
Pitch 6 : (20) Climb the face left of a jagged jam crack from a block. 4m up move right and up into a diagonal break leading up and right (40m)
Pitch 7 : (17) Up a chimney to a ledge. (15m)
Pitch 8 : (22) Traverse right & climb up flakes/blocks to below the red roof. Climb through the flared crack & step onto a narrow ledge on the right. Climb the wall & left-hand edge of the overlap above to a ledge (45m).
Pitch 9 : (17) Traverse right past a block & up the wall (35m).
Pitch 10 : (17) Climb up from the left-hand end of the ledge into a corner on the left of the coffin roof. Step right, up, and traverse across left to a narrow stance.
Pitch 11 : (19) Climb the corner on the right for about 10m to a balcony traverse left. Up to the roof. Traverse right until able to pull through the roof. Stance in a chimney.
Pitch 12 : Climb up easily (15) to reach a long slab on the right. Either go diagonally right (2 pitches 11,11) to finish, or go left and 3 pitches (15,19,11) up cracks lead to the summit.

FA: D. Cheesemond & A. Dick 1977
FFA: AdK & E. February 1983
FFSolo: AdK 1985

[The Description is given as the 'Renaissance Direct' going straight from pitch 11. FA pitch 11 & 12 - C.Lomax 1979. The original A₄ finish is incorporated partially into the NW Direct.]

Western Cape Rock

4. N.W. Frontal (17) ***

Starts at a prominent rib running up and merging into the middle of the N.W. Face. Scramble up easy rock on the left-hand side of the rib, and move around rightwards onto a step below steeper rock.

Pitch 1 : (10) Climb straight up the front of the buttress moving left around the corner at one point.

Pitch 2 : (11) Continue up the recess above which is slightly left of the corner.

Pitch 3 : (10) Climb the face on the right to a gendarme, more left around the pinnacle and belay in a cubbyhole.

Pitch 4 : (14) Traverse left across the face over a loose block. Climb diagonally left to an easing, and scramble up right.

Pitch 5 : (17) Climb a crack & move out right onto a slab. At the top climb diagonally left & up to a thin ledge. From the left-hand side move up, & then back right and up to a big ledge.

Pitch 6 : (15) Climb onto a pinnacle and onto the face. Move right and up for a low move, before traversing left & up a recess to a 'Suitcase Stance'.

Pitch 7 : Either : a) Climb the finger crack above the block to a sloping ledge and continue up the open book to a peg. Move up and traverse right to a scoop. Climb up to a recessed stance (Original route - grade 18). Alternatively : b) From the Suitcase Stance drop down & move right into a flakey groove. Rejoin the original route in the open book. (Variation - Grade 17).

Pitch 8 : (15) Climb the crack on the right to easy angled waterworn rock. Continue until the rope runs out.

Pitch 9 : (13) Climb across the slabs to the open book on the right. Move up, and traverse right along a rail to a ledge around the corner.

Pitch 10 : (13) Climb the luggy face to a higher ledge.

Pitch 11 : (15) Up the watercourse and move up left to the roof. Traverse left until able to climb the face above on rounded holds. Scramble off.

FA: M. Mamacos & C. Butler 1949

5. N.W. Direct (23) ***

Scramble up the first pitches of Renaissance or NBNW to the big ledge. Start on the front of the Renaissance jam crack pillar.

Pitch 1 : (21) Climb the crack/recess system & continue to the top of the pillar. Scramble to the next ledge directly above.

Pitch 2 : (20) The Dark Wall: Follow the vague break leading rightwards through steep grey rock. Stance in the recess.

Pitch 3 : (17) Relief. Step right & climb directly up to the highest ledge. Stance right of a long block.

Pitch 4 : (21) Uncertainty. Climb up & left over uncertain rock, then up to a narrow ledge. Keep right & continue for 12m to a small narrow stance. Traverse 12m left to belay at a hollow slab (peg).

Pitch 5 : (22) Climb leftwards for about 8m. Startling beneath the black roof rail 13m right to a recess which is climbed to a small ledge with grass & a block.

Pitch 6 : (23) Climb up for 3m from the left end of the ledge to the roof, pass it on the right wall, and continue up and left. Go diagonally rightwards to reach more laid back rock (original Renaissance A₄ pitch)

FA: K. Smith & C. Lomax 1983

FFA: AdK, E. February & M. Versveldt 1983

(See Topo Diagram.)

6. South Atlantic High (22) ***

10 pitches. Line up prominent groove system on white amphitheatre. [See 1989 MCSA Journal]

FA: J. Colenso & A. Roff 1989

a Route up the large square-topped pillar to the left of the North West Face of Du Toits Peak

CHALONGA 22

Kevin Smith Chris Lomax Butch de la
12 + 13 November 1983

